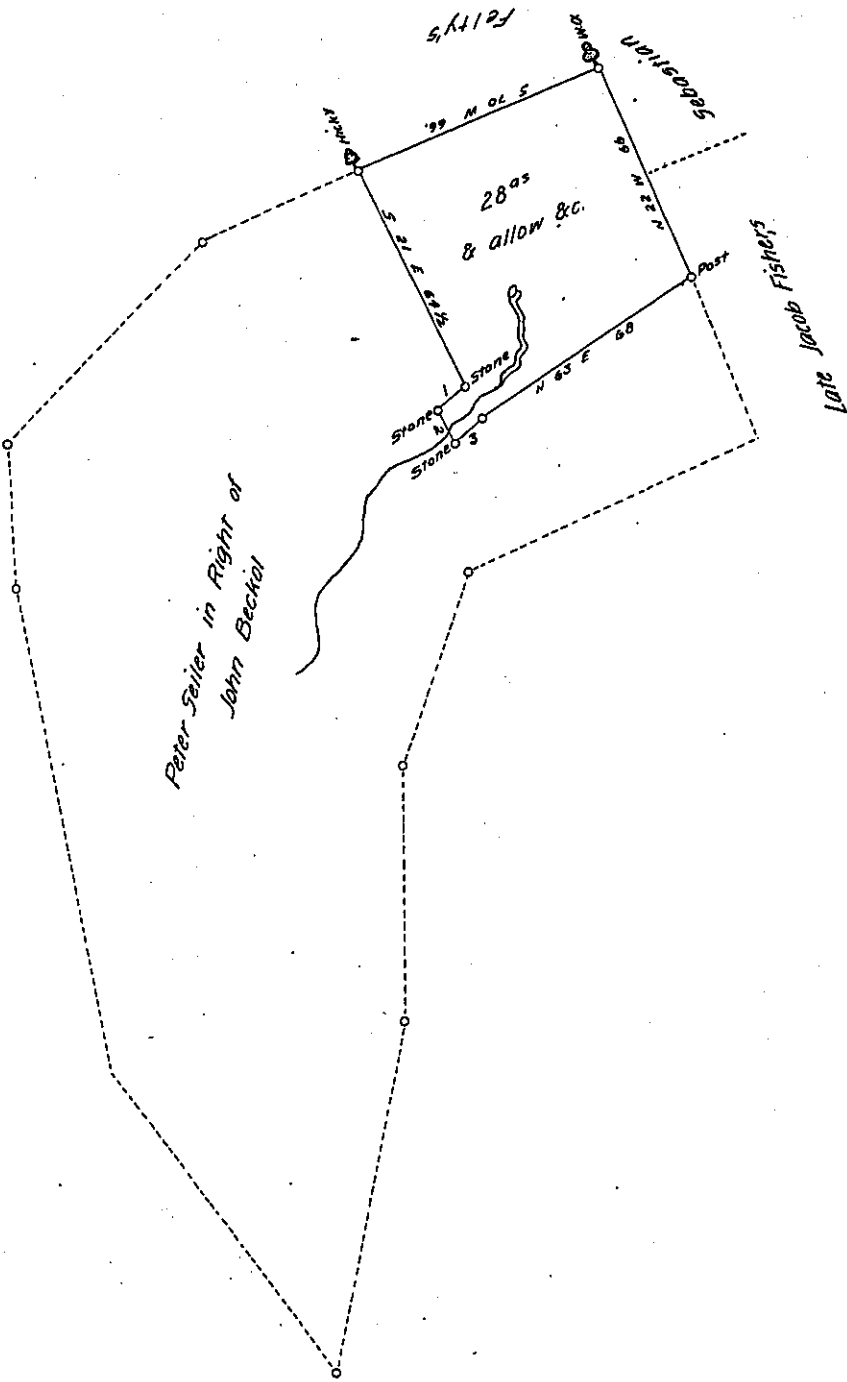


Courses  
 Several Marked as follows  
 No 1 - S 53 W 9  
 " 2 - S 27 E 10  
 " 3 - N 47 E 8



The above described tract of land Situate in Swatara township in the County of Lebanon Containing Twenty eight acres & allow-  
 ance &c It being part of a larger tract which by Warrant dated the 19<sup>th</sup> day of October 1749 was survey<sup>d</sup> to John Bechol. Given un-  
 der my hands this 24<sup>th</sup> day of March A D 1830. To Henry Yeakley "

To Gabriel Hiester Esq<sup>r</sup>  
 Surveyor General.

To<sup>o</sup> Kreider Jr.  
 Deputy Surveyor

IN TESTIMONY that the above is a copy of the original remaining on file in the Department of  
 Internal Affairs of Pennsylvania, made conformably to an Act of Assembly  
 approved the 16th day of February, 1833, I have hereunto set my Hand  
 and caused the Seal of said Department to be affixed at Harrisburg, this

twenty sixth day of October 1904.

*Geo. B. Brown*  
 Secretary of Internal Affairs.